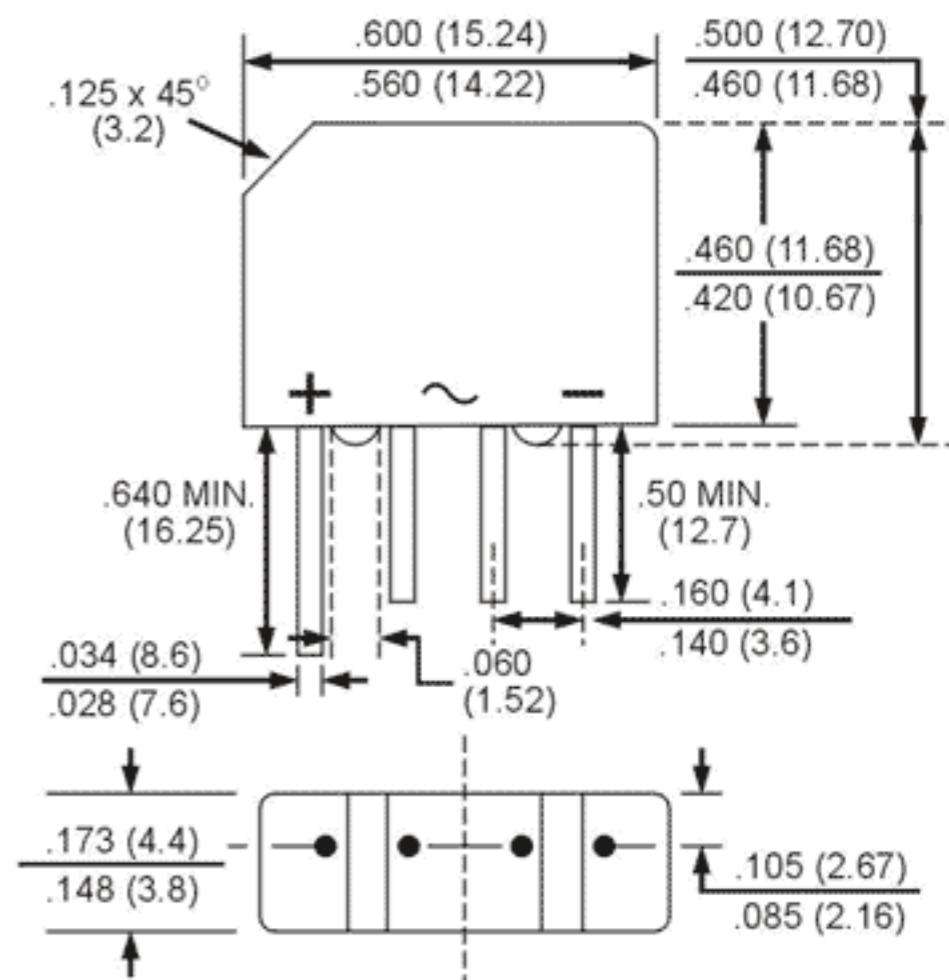


**SILICON BRIDGE RECTIFIERS  
GLASS PASSIVATED  
BRIDGE RECTIFIERS**

REVERSE VOLTAGE - 50 to 1000 Volts  
FORWARD CURRENT - 2.0 Amperes

**FEATURES**

- Surge overload rating - 50 amperes peak
- Ideal for printed circuit board
- Plastic material has Underwriters Laboratory Flammability Classification 94V-0
- Mounting Position: Any



Dimensions in inches and (millimeters)

**MAXIMUM RATINGS AND ELECTRICAL CHARACTERISTICS**

Rating at 25°C ambient temperature unless otherwise specified.  
Resistive or inductive load, 60Hz.  
For capacitive load, derate current by 20%

CHARACTERISTICS	TBP005(G)	TBP01(G)	TBP02(G)	TBP04(G)	TBP06(G)	TBP08(G)	TBP10(G)	UNIT
Maximum Recurrent Peak Reverse Voltage	50	100	200	400	600	800	1000	V
Maximum RMS Bridge Input Voltage	35	70	140	280	420	560	700	V
Maximum DC Blocking Voltage	50	100	200	400	600	800	1000	V
Maximum Average Forward Rectified Output Current @ $T_A=50^\circ\text{C}$	2.0							A
Peak Forward Surge Current, 8.3ms single half sine-wave super imposed on rated load	50.0							A
Maximum Forward Voltage Drop per Bridge Element at 2.0A Peak	1.1							V
Maximum Reverse Current at Rated DC Blocking Voltage per Element	10.0							$\mu\text{A}$
Maximum Reverse Current at Rated DC Blocking Voltage per Element $T_A=100^\circ\text{C}$	1.0							mA
Operating Temperature Range $T_J$	-55 to +125							$^\circ\text{C}$
Storage Temperature Range $T_A$	-55 to +150							$^\circ\text{C}$