

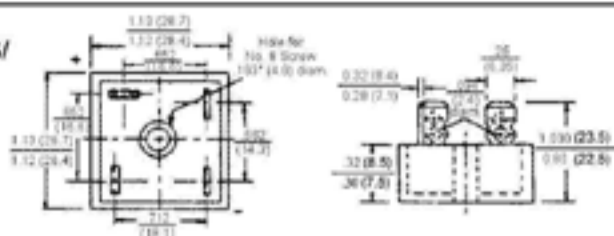
## SILICON BRIDGE RECTIFIERS

REVERSE VOLTAGE - 50 to 1000 Volts  
FORWARD CURRENT - 10/15/25/35/50 Amp.

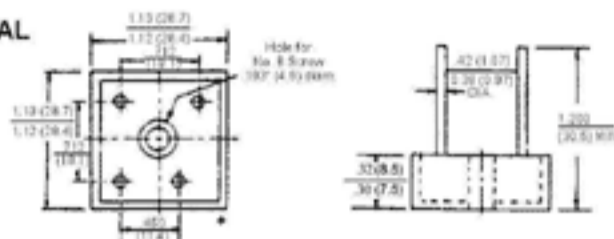
### FEATURES

- Surge overload 240~400 Amperes peak
- Low forward voltage drop
- Mounting Position: Any
- Electrically isolated base - 2000 Volts
- Solderable 0.25" FASTON terminals
- Materials used carries U/L recognition

#### TERMINALS/ METAL

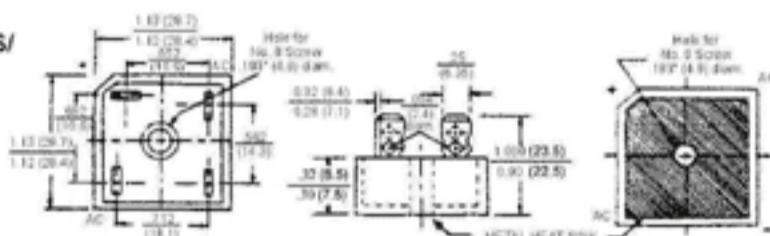


#### LEAD / METAL

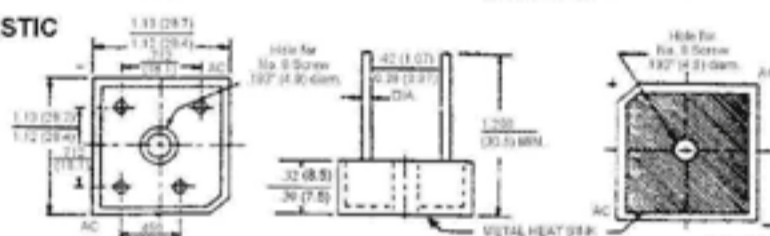


MKBPC

#### TERMINALS/ PLASTIC



#### LEAD / PLASTIC



MBR

## MAXIMUM RATINGS AND ELECTRICAL CHARACTERISTICS

Rating at 25°C ambient temperature unless otherwise specified.

Resistive or inductive load 60Hz.

For capacitive load current by 20%

CHARACTERISTICS	MBR(W)	MBR(W)	MBR(W)	MBR(W)	MBR(W)	MBR(W)	MBR(W)	UNIT			
	MKBPC(W)	MKBPC(W)	MKBPC(W)	MKBPC(W)	MKBPC(W)	MKBPC(W)	MKBPC(W)				
	10005	1001	1002	1004	1006	1008	1010				
	15005	1501	1502	1504	1506	1508	1510				
	25005	2501	2502	2504	2506	2508	2510				
	35005	3501	3502	3504	3506	3508	3510				
	50005	5001	5002	5004	5006	5008	5010				
Maximum Recurrent Peak Reverse Voltage	50	100	200	400	600	800	1000	V			
Maximum RMS Bridge Input Voltage	35	70	140	280	420	560	700	V			
Maximum Average Forward Rectified Output Current @T <sub>c</sub> =55°C	MKBPC 10	10	MKBPC 15	15	MKBPC 25	25	MKBPC 35	35	MKBPC 50	50	A
Peak Forward Surge Current 8.3ms single half sine-wave super imposed on rated load	MKBPC 10	240	MKBPC 15	300	MKBPC 25	350	MKBPC 35	400	MKBPC 50	400	A
Maximum Forward Voltage Drop per element at 5.0/7.5/12.5/17.5/25.0A Peak	1.0								V		
Maximum Reverse Current at Rate DC Blocking Voltage per element @T <sub>A</sub> =25°C	10								μA		
Operating Temperature Range T <sub>c</sub>	-40 to +125								°C		
Storage Temperature Range T <sub>A</sub>	-40 to +125								°C		

NOTES: Also available on KBPC 10W/15W/25W/35W/50W series.