

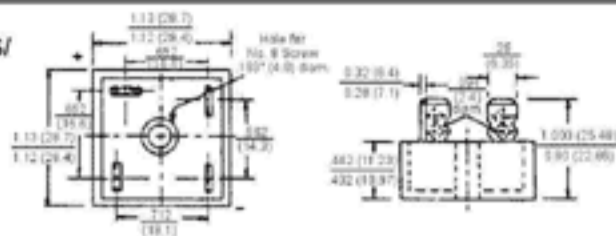
GLASS PASSIVATED BRIDGE RECTIFIERS

REVERSE VOLTAGE - 50 to 1000 Volts
FORWARD CURRENT - 10/15/25/35/50 Amp.

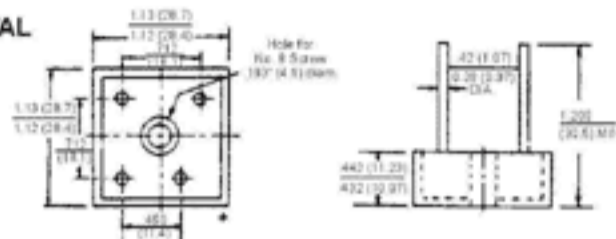
FEATURES

- Surge overload 200~400 Amperes peak
- Low forward voltage drop
- Mounting Position: Any
- Electrically isolated base - 2000 Volts
- Solderable 0.25" FASTON terminals
- Materials used carries U/L recognition

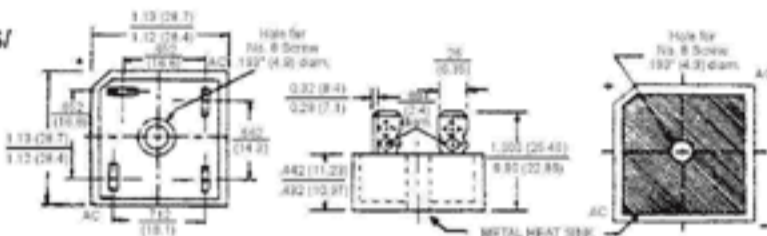
TERMINALS/ METAL



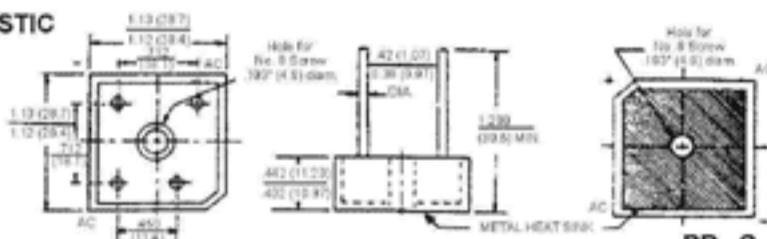
LEAD / METAL



TERMINALS/ PLASTIC



LEAD / PLASTIC



MAXIMUM RATINGS AND ELECTRICAL CHARACTERISTICS

Rating at 25°C ambient temperature unless otherwise specified.
Resistive or inductive load 60Hz.
For capacitive load current by 20%

CHARACTERISTICS	BR...G(W)		BR...G(W)		BR...G(W)		BR...G(W)		UNIT	
	10005		1001		1002		1004			
	15005		1501		1502		1504			
	25005		2501		2502		2504			
	35005		3501		3502		3504			
	50005		5001		5002		5004			
Maximum Recurrent Peak Reverse Voltage	50		100		200		400		V	
Maximum RMS Bridge Input Voltage	35		70		140		280		V	
Maximum Average Forward Rectified Output Current @T _c =55°C	BR...G(W)		10		BR...G(W)		15		A	
Peak Forward Surge Current 8.3ms single half sine-wave super imposed on rated load	BR...G(W)		200		BR...G(W)		300		A	
Maximum Forward Voltage Drop per element at 5.0/7.5/12.5/17.5/25.0A Peak	1.1									V
Maximum Reverse Current at Rate DC Blocking Voltage per element @T _A =25°C	10									μA
Operating Temperature Range T _c	-55 to +150									°C
Storage Temperature Range T _A	-55 to +150									°C

NOTES: Also available on KBPC 10W/15W/25W/35W/50W series.